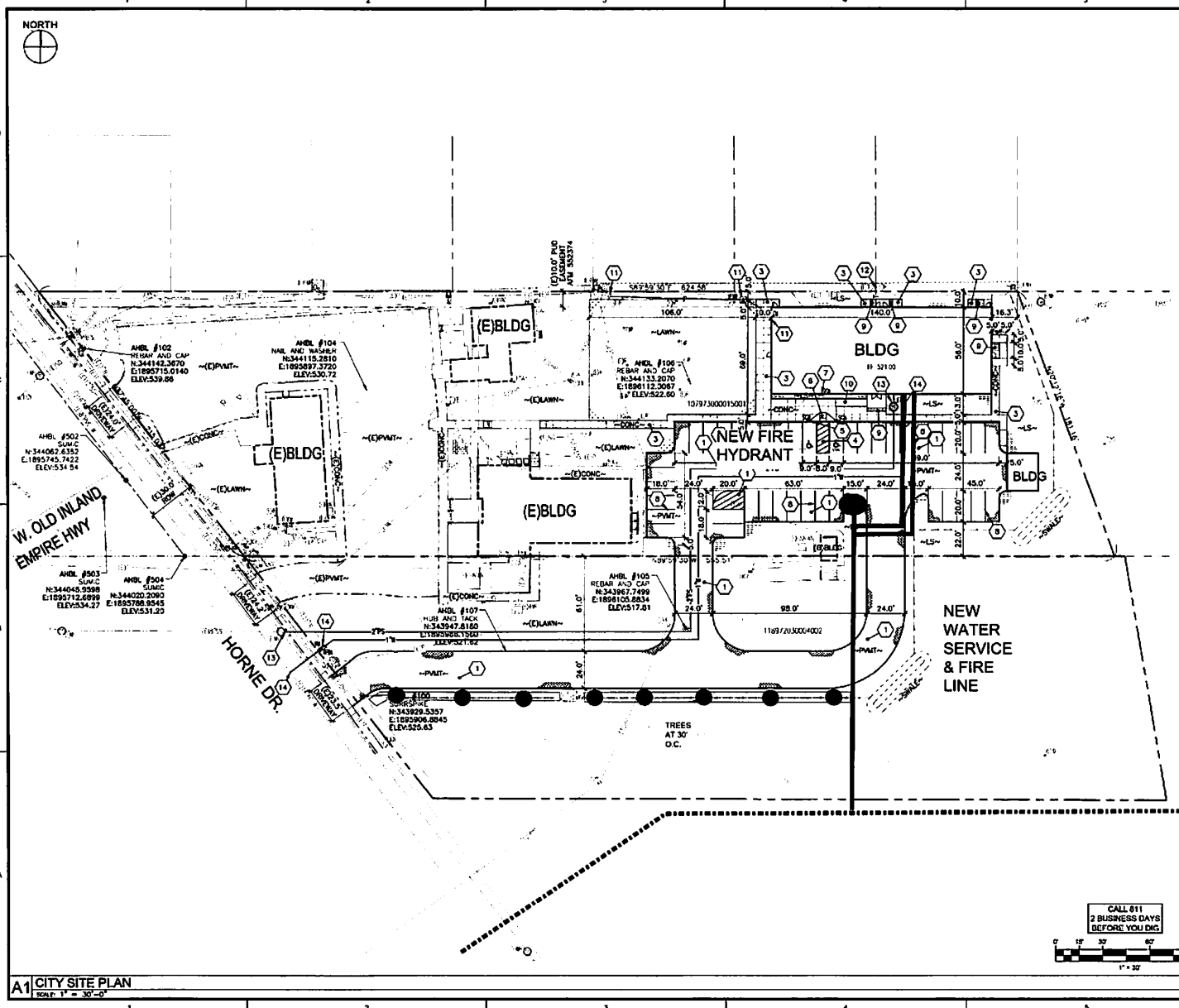


RFP 2023-02 Construction Project Management Services

Exhibit A - Benton City Project Site Plan



KEY NOTES

- STANDARD ASPHALT SECTION - 2-1/2" THICK ASPHALT OVER 6" TOP COURSE PER WOODOT 9-03.9(3)
- STRIPED NO. PARKING AREA
- STANDARD CONCRETE SECTION - 4" THICK CONCRETE SIDEWALK OVER 4" TOP COURSE PER WOODOT 9-03.9(3), TROWEL CONTROL JOINTS AT 5' O.C. AND INSTALL EXPANSION JOINTS AT 30' O.C.
- PAINT WHITE 4" WIDE PARKING STAMPING, LETTERING, AND ACCESSIBLE PARKING SYMBOLS PER ADA REQUIREMENTS AS SHOWN ON PLAN
- ACCESSIBLE PARKING SIGN
- ACCESSIBLE AISLE SIGN
- ACCESSIBLE RAMP
- PAINT 4" WHITE PARKING STRIPE, TYP
- STAIRS, BY OTHERS
- RAMP, BY OTHERS
- CONNECT POWER INTO EXISTING POWER POLE TO NEW TRANSFORMER AND METER
- CONNECT TELEPHONE/TV INTO EXISTING PEDESTAL TO NEW BUILDING
- SEWER LIFT STATION AT NEW BUILDING WITH PRESSURE SEWER TO EXISTING MANHOLE AT STREET
- 1" WATER TAP WITH 1" METER AND 1" RSPA IN HOT BOX WITH POWER THEN ROUTE TO NEW BUILDING

VICINITY MAP

NORTH

W. OLD INLAND EMPIRE HWY
GRACE AVE
BENTON CITY
225

**NOT FOR CONSTRUCTION
CITY SITE PLAN
INSPIRE ACADEMY
INSPIRE ACADEMY
BENTON CITY, WA**

NOTES

- PARKING:
40 STANDARD STALLS, 4 ACCESSIBLE STALLS, 1 ACCESSIBLE VAN STALLS, TOTAL 42 STALLS.

CALL 811
2 BUSINESS DAYS
BEFORE YOU DIG

0' 15' 30' 60' 90'
1" = 30'

APPROVAL

DESIGN	S/JT	08/22/22
CHECKED	PTK	08/22/22
APPROVED	PTK	08/22/22

SCALE: AS NOTED
CADD: 22111SPO1
JOB No. 22111
DWG. No. **SP01**



A1 CITY SITE PLAN
SCALE: 1" = 30'-0"